



## al2, THE ATHENIAN DESIGN FURNITURE BRAND

The choice of unique materials in combination with the production process, that consists of craftsmanship and advanced machinery, make the **al2** production cycle distinctive. Here is a summary of the operational strategy of **al2**, a Greek company with a catalog of furniture that interprets contemporaneity in its design projects. A path that Manos Alexopoulos, in the name of a modernity of high-level finished pieces, inaugurated in 2013 by developing and naming **al2** his father's artisan business founded in 1970 and specialized in woodworking.

The development continues in harmony with his children Alexia and Dimitris, updating the production with the help of three external designers (the Greek Sotiris Lazou, the Italian studio Ate Rote of Bergamo and, again Italian, Antonio Facco) plus an internal team (AL2 Lab). Always in a harmony between volumes and proportions that confirms a global design vision.

Starting points and brand guidelines that enhance the development of a rigorous and unmistakable style.

**al2** is distributed in 30 countries and on 4 continents with ISO certification of quality management and industrial design.

The factory covers an area of 3000 square meters and uses natural woods such as oak, walnut and smoked eucalyptus. High-tech machinery is used for the manufacturing and the production also includes ceramics without the use of melamine.

To display its products, **al2** uses a 900 square meter showroom.





## **al2 at 3days of Design** **SHAPES INSPIRED BY NATURE**

The ability of beauty to attract, that charm which today is fashionable to call “charisma”, is here to define the enchantment created by people, but also by environments and objects. A term as strong as a mood that is fully expressed in the new **al2** collection which enhances its path with a design capability of integrating the basic elements with a lot of character and therefore of creating furnishing solutions with an architectural imprint. **“Shapes inspired by nature”** is a concept where different textures and shapes are the protagonists, creating new lifestyle experiences. For **al2**, comfort is the new luxury, an element that is evident across all its products. Authenticity and uniqueness hold a high position on **al2**’s value pyramid, contributing into helping people rediscovering themselves through the right choice of products and materials for them. The shapes of nature were the main source of inspiration for our designers, who combined fluid and elegant design with natural raw materials resulting into the creation of serene and harmonious spaces.

Present this year at 3days of design, al2 will be located at

**Frederiksgade 1, Copenhagen, Denmark**  
**ROOM 268&269**

**Copenhagen, June 2025**



al2 - Faka Area, 19300,  
Aspropirgos, Greece  
[info@al2.gr](mailto:info@al2.gr)  
[www.al2.gr](http://www.al2.gr)

## ZEPHYR

**Design by Antonio Facco design studio**

Table 240\*120\*75cm  
Smoked Eucalyptus - metal bronze lacquer

Like the relentless breeze shaping the Namibian coastline, Zephyr is born from the dialogue between nature and form. Its sinuous volume is inspired by the wind sculpting the sand, creating gentle curves and fluid surfaces, perfectly balanced between strength and lightness. Zephyr is matter in motion, a contemporary icon of elegance that brings the poetry of the desert into your everyday life.





## ECHO

**Design by Antonio Facco design studio**

Sideboard 240\*50\*78cm  
Roughed oak - Walnut top

Compact, essential, powerful. Echo Sideboard stems from the same sculptural vision as Echo Table, transforming matter into a pure, monolithic volume that commands space with understated elegance.

Sharp lines, perfect proportions, a balance between strength and lightness. Echo Sideboard is not just a storage piece—it is minimal architecture, a functional sculpture that holds and interacts with its surroundings, reflecting the beauty of the essential.



## **CIRCUM**

**Design by Sotiris Lazou design studio**

Sideboard 240\*50\*79cm  
Lacquer - Glass top

The inspiration stems from the simplicity of geometric forms and the dynamic nature of repeating shapes. The surfaces of the cabinet are adorned with a recurring circular pattern, inspired by the geometric forms founded in the 20th-century. This pattern adds movement and harmony, creating a strong visual impact while maintaining the functionality and simplicity of the design.



## LÁAS

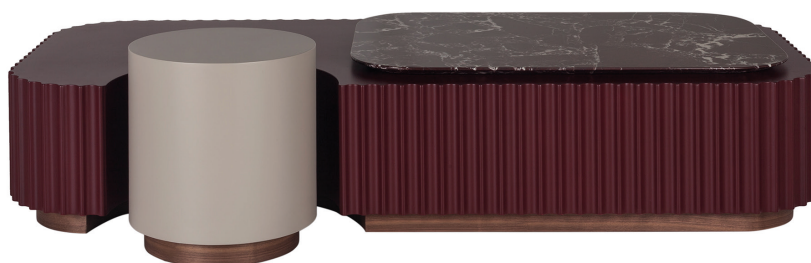
**Design by Minas Kosmidis**

Low Table 160\*70\*32cm  
Lacquer - Marble

A meeting point between the past and the present. Marble, a symbol of stability and timelessness, meets bold color, introducing contrast, energy, and movement. This interplay challenges tradition while embracing it, creating a visual and tactile dialogue between classic refinement and contemporary expression.

Its form, inspired by ancient columns, does not simply imitate but reinterprets—stripping the familiar down to its essence and reshaping it with a modern sensibility.

It is an object that goes beyond functionality—it tells a story. A story of materials, influences, and emotions that interact, creating a sense of continuity with the past while opening new possibilities for the present.



## MUSE

**Design by al2 LAB**

Bookcase 249\*36\*250cm  
Oak - Metal - LED light

The muse bookcase system is designed to bring elegance, functionality and versatility. The columns - made of solid wood and metal, with integrated LED lighting - are available in two heights, and the shelves in different dimensions, making the system completely customised. Extra boxes with doors are also available, turning the system into a storage space as well.



## **SOLIDA**

**Design by Sotiris Lazou design studio**

Chair 56\*56\*82cm  
Upholstered

The design of the solida chair highlights the essence of minimalism, where every detail has been thoughtfully chosen to enhance the harmony of form and function. The unified base, which seamlessly connects the two geometric elements, creates a sense of stability and modern sophistication, making it ideal for any setting, whether it's an office or a home environment.





## CLARA

**Design by Simone Ciarmoli and Miguel Queda**

Chair 51\*53\*84cm  
Solid walnut - Solid oak - leather

Minimal retro elegance, oak and walnut structure, geometric lines that soften as they curve under the upholstered seat, like the dynamic light backrest that marks the modern balance of the piece with a design spirit.



## ECHO

**Design by Antonio Facco**

Table 240\*120\*75cm  
Dark oak

Harmonizing design with nature, achieving an elegant and authentic synthesis. The legs, crafted to resemble smoothed and weathered monoliths, confirm an artistic interpretation of natural elements, blending simplicity and beauty by combining the strength of stones with human creativity.



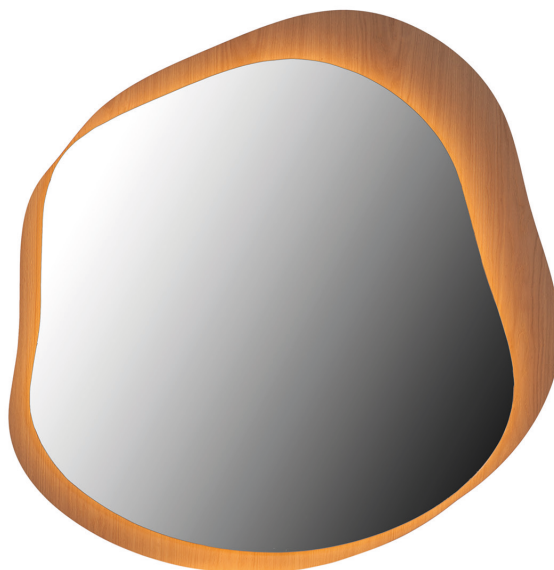
## LAGO

**Design by Simone Ciarmoli and Miguel Queda**

Mirror ø110\*3cm  
Oak - Mirror - LED light

Like the vision of a lake surrounded by earthy-toned shores, the soft, irregularly shaped Lago Mirror overlaps a wood background, a simple composition with a fluid movement reminiscent of water. The backlit perimeter outlines its shape, suggesting charm and modernity.

With its essential lines, the Lago Mirror is a functional complement that can be combined with multiple types of furniture.



## DESIGNERS

### Sotiris Lazou design studio

"Let's do Greek Design International". The motto of Sotiris Lazou, industrial designer, with a holistic approach to design, that combines Greek culture with international contemporary influences, resulting in projects that reflect timeless elegance and versatility. In 1995 he founded with Vicky Gkliati his design studio, specialised in Industrial design.



### Ate Rote design studio

Graduated at the Polytechnic of Milan in Architecture, he opened ATE ROTE Design Office in 2015. He has exhibited in galleries and international design events and has been a visiting lecturer at the GSSI of L'Aquila, the IUAV of Venice and the Polytechnic of Milan. He has collaborated as a design consultant in Design Thinking with the Bergamo Chamber of Commerce and has written for Design and Architecture magazines. He currently holds the role of Executive Design Director for Artop Design group Europe and is conducting Ph.D. research at the Department of Design Engineering of Aegean University.



## DESIGNERS

### Antonio Facco

At just thirty years, architect Antonio Facco has worked with top studios and companies like Antolini, Cappellini, and Augusta Westland. By understanding the habits of new generations, he's developed diverse creativity in graphic design, photography, and interior decoration. This lets him design everything from single items to entire living areas.



### Simone Ciarmoli & Miguel Queda

Founders of Ciarmoli Queda Studio, they combine a professional approach with a comprehensive and global perspective on the ethical, aesthetic, and artisanal values of the world. In their projects, functional and formal elegance is paired with sensual elements, inspired by colors and materials. Their extensive creative background in top fashion brands, has enabled them to design complete furnishings for yachts, yacht clubs, and luxurious villas.





## DESIGNERS

### Minas Kosmidis

Architect Minas Kosmidis, graduated from the School of Architecture of the Aristotle University of Thessaloniki.

In 1991 he completed his postgraduate studies in industrial and furniture design in the École d'Architecture de Paris-Conflans, having won a state scholarship. In 1993, he establishes his first architecture studio in his hometown, Komotini.

The studio Minas Kosmidis Architects is actually the evolution of the architect's personal studio, after his permanent relocation in 2007 in Thessaloniki, introducing at the same time a new corporate identity and a new philosophy. In 2019 he also created a studio in Athens

The firm is now active all around Greece and abroad, in countries such as Cyprus, Egypt, Russia, and China, undertaking architecture and interior design projects. During the last years the studio has created a broad and diversified portfolio in the fields of private housing, hospitality, retail, and more importantly in the sector of food service and entertainment.

Many of the studio's projects have been featured in renowned Greek and international magazines and leading websites and have been awarded and/or shortlisted in international competitions such as the "Best of Year" awards of the American magazine "Interior Design", the Chinese competitions "Modern Decoration awards" and "Idea Tops", the English competition "FX awards" the DNA Paris Design Awards, the German Design Awards and the Grail Awards.

In 2024 he launched a new project called MK5, a side project that promotes collaborations between artists of different fields.

